



CLEAN ENERGY

COMMUNITY INITIATIVE

Together with representative clean energy partners, the College of Engineering, Department of Life Sciences Communication, and the Nelson Institute for Environmental Studies at the University of Wisconsin–Madison are organizing a Clean Energy Community Initiative, which seeks to advance the overall economics of clean energy within our region—Wisconsin and the upper Midwest—and facilitate a *community-led, solution-focused clean energy transition*.

Wisconsin is already home to a thriving clean energy cluster made up of enabling infrastructure, strong community and academic engagement, research and knowledge transfer, venture capital, entrepreneurship, workforce development, job growth, and a culture of collaboration. In partnership, we can build an engine that empowers communities, strengthens collaboration, identifies and closes technology and policy gaps, and transforms our cluster into a growing, evolving innovation ecosystem with long-term sustainability.

COMMUNITY WORKSHOPS

Join our series of clean energy community workshops—details coming soon—in which we will look to forge creative partnerships to build innovation capacity, pilot and catalyze initiatives, and launch impactful programs.

Together, we can envision and build clean energy transition initiatives dedicated to innovation, economic growth, and workforce development within the region, and especially in our region’s marginalized communities.

WE WANT TO KNOW...

- What do Wisconsin and upper Midwest stakeholders/communities have to say about emerging energy needs?
- What challenges does your community face?
- How do we select the right clean energy technologies and activities?
- What are the current opportunities in policy, workforce, investment, and infrastructure?
- What new opportunities and pathways should we create in these areas?
- What is our region already doing well, and can we expand on it?
- And more... stay tuned!

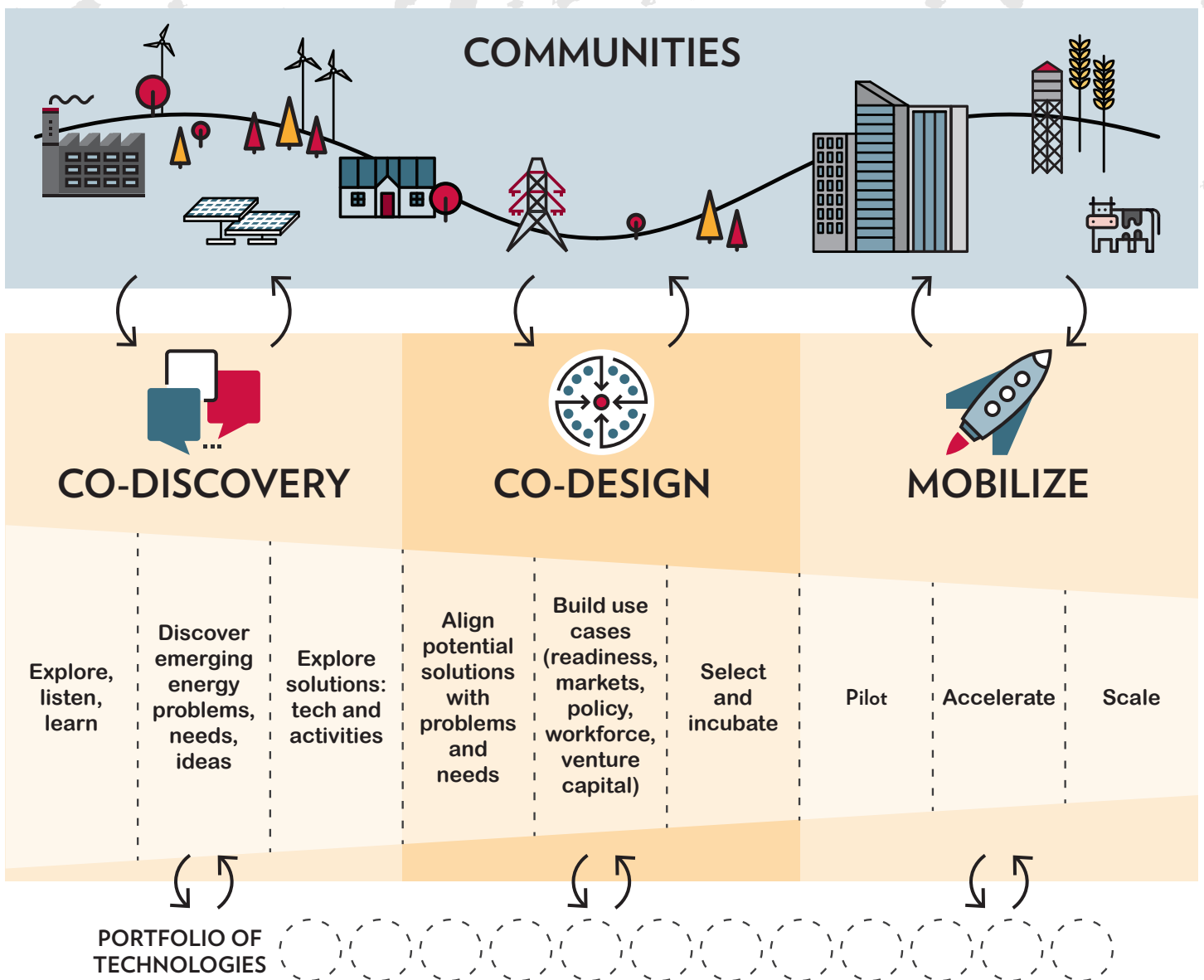


[Click here to register for Clean Energy Community Workshops](#)

THE APPROACH

We plan to immerse ourselves in the emerging energy challenges, needs, and ideas of our region's many communities: from rural to inner city, from utilities to end users, from the Mississippi River to the shores of Lakes Michigan and Superior, and everything in between.

Overcoming the challenges of a clean energy transition will require the active and equitable participation of all communities in the discovery, design, development, and delivery of solutions in five key areas, visualized to the right in yellow. The overarching community-led, solution-focused process is visualized below.



[Click here to register for Clean Energy Community Workshops](#)