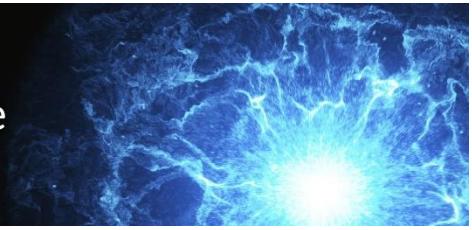




**Wisconsin Public Utility Institute**  
UNIVERSITY OF WISCONSIN-MADISON



**DENISE SCHMIDT**  
**Public Service Commission of Wisconsin**

Denise Schmidt is the administrator of the Division of Water Utility Regulation and Analysis at the Public Service Commission of Wisconsin (PSCW). For the last 8 years, Denise has worked at the PSCW on water policy and regulatory issues. Denise's previous positions with the

PSCW included water conservation coordinator and water policy advisor. Prior to joining the PSCW, Denise worked on utility financial management, water resource and land use planning, and program and policy development as a regional and local planner and consultant based in Wisconsin, Connecticut, and Atlanta, Georgia. Denise is the outgoing chair of the Alliance for Water Efficiency's education and outreach committee, has served two terms as a trustee on the board of the American Water Works Association's (AWWA) Wisconsin Section, is an instructor with Michigan State University's Institute for Public Utilities, and is a member of NARUC's staff subcommittee on water as well as a country representative for the International Water Association's water loss specialists group. Additionally, Denise is past chair of the Town of Middleton's plan commission and currently serves on the Town's board of supervisors. She has a BS in environmental health science from Purdue University and an MPP from Harvard University's Kennedy School of Government.