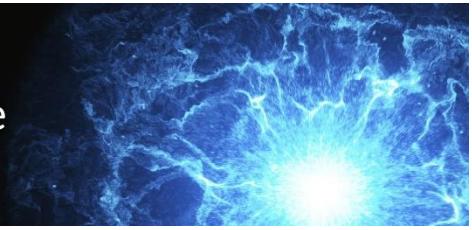




**Wisconsin Public Utility Institute**  
UNIVERSITY OF WISCONSIN-MADISON



## **COREY LOTT**

### **Christensen Associates Energy Consulting**

Corey Lott specializes in demand studies for energy and water utilities. She combines her knowledge of applied econometrics, strong Stata programming skills, and several years of experience with utility data management to perform econometric analysis of large and complex billing datasets. She has evaluated water demand management and demand response programs, estimated price elasticities, and designed a drought messaging campaign.

Corey's recent research focused on demand response to price and non-price incentives, including social comparisons and voluntary drought restrictions. Her investigation revealed consumer response to myriad utility actions, such as providing better information on monthly utility bills to clarify complex increasing block tariffs, automatic billing enrollment, and "nudges" towards water conservation during a drought.