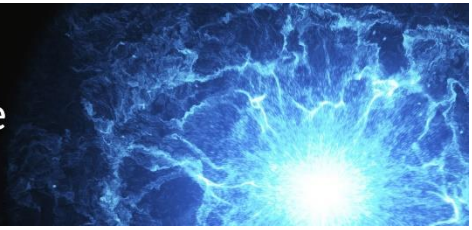




Wisconsin Public Utility Institute
UNIVERSITY OF WISCONSIN-MADISON



SALLY TALBERG

Michigan Public Service Commission

Sally Talberg was first appointed to the Michigan Public Service Commission (MPSC) on July 3, 2013, by former Governor Rick Snyder and served as chair from January 4, 2016, until July 27, 2020. Her term ends July 2, 2021. Through her involvement with the National Association of Regulatory Utility Commissioners (NARUC), Sally serves on the NARUC Committee on Gas and on the Federal-State Joint Boards on Jurisdictional Separations and Universal Service. She also serves as a member of the U.S. Department of Energy's State Energy Advisory

Board (STEAB). From 2013-2019 she served on the NARUC Committee on Telecommunications and on the board of directors of the Organization of MISO States, of which she was president in 2016. Prior to her appointment to MPSC, Sally worked in the public and private sectors with a focus on energy and environmental policy and utility regulation. She served as a senior consultant at Public Sector Consultants, focusing on energy policy and helping to establish Michigan Saves, an energy efficiency financing organization. She previously served as an analyst at MPSC, managed enforcement and contested cases at the Michigan Department of Environmental Quality, and advised commissioners at the Public Utility Commission of Texas. Sally holds a bachelor of science in environmental and natural resources policy studies from Michigan State University and a master's degree in public affairs from the Lyndon B. Johnson School of Public Affairs, University of Texas-Austin.