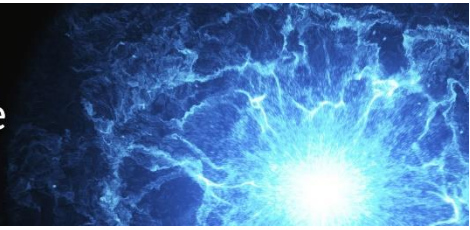




Wisconsin Public Utility Institute
UNIVERSITY OF WISCONSIN-MADISON



MANUEL TEODORO

University of Wisconsin-Madison

Manny Teodoro is an associate professor in the La Follette School of Public Affairs at the University of Wisconsin-Madison. Previously he was an associate professor of political science at Texas A&M University and an assistant professor of political science at Colgate University. He works at the intersection of politics, public policy, and public management. His research focuses mainly on U.S. environmental policy and implementation, including empirical analyses of environmental justice. In addition, he pursues a line of applied research focused on utility management, policy, and finance. He has developed novel methods for analyzing utility rate equity and affordability, and he works on these issues directly with governments and water sector leaders across the United States. Manny also studies public management and bureaucratic politics, emphasizing labor markets as political phenomena and predictors of organizational performance. His award-winning book, *Bureaucratic Ambition* (2011, Johns Hopkins), argues that ambition shapes administrators' decisions to innovate and to engage in politics, with important consequences for innovation and democratic governance. Manny's research has been funded by the National Science Foundation, Water Research Foundation, and Cascade Water Alliance, and has been published in the *American Journal of Political Science*, the *Journal of Public Administration Research and Theory*, *Public Administration Review*, *Policy Studies Journal*, *Social Science Quarterly*, *Journal of Public Policy*, *AWWA Water Science*, *American Review of Public Administration*, *Water Security*, *Journal AWWA*, and *PS: Political Science & Politics*. Manny received his BA in political science from Seattle University, his MPA in public administration from Cornell University, and his PhD in political science and public policy from the University of Michigan.