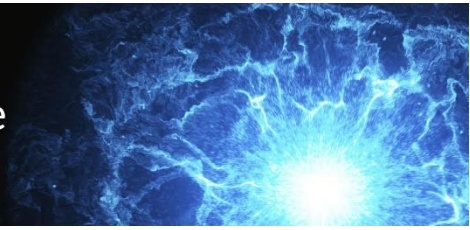




Wisconsin Public Utility Institute
UNIVERSITY OF WISCONSIN-MADISON



DOUG AHL
Slipstream Group, Inc.

Doug brings more than two decades of extensive energy related experience to Slipstream. He has quantified potential impacts of climate warming on carbon sequestration and biomass growth; simulated ecosystem processes related to water, energy, and carbon flows; and developed and tested analytic solutions for energy portfolio management. Before joining Slipstream, Doug led cooperative projects between NASA and private industry aimed at developing remote sensing and geospatial technologies. He successfully built and managed a research and engineering group with a reputation for high standards and quality. He has a strong track record of developing staff analytical and project

management capabilities with attention to career development. He also has extensive experience evaluating climate mitigation strategies and impacts on biological and industrial processes. Driven by Slipstream's mission, his team measures Slipstream's mission impact in four areas: innovation, environment, social equity, and economic. Doug previously worked as a senior analyst for Ascend Analytics in Boulder, Colorado, where he led the development of a hydrologic flow and generation simulation system, and for Lockheed Martin as program lead for NASA's Commercial Remote Sensing program. While with Lockheed Martin, Doug also led the Visiting Investigator Program. His professional experience also includes a position as research associate with the University of Wisconsin-Madison's Nelson Institute for Environmental Studies. Doug is on the advisory board for the University of Wisconsin-Platteville's College of Engineering, Mathematics and Science, and continues to serve on various professional boards and as science advisor for Clean Wisconsin. Doug holds a doctorate in environmental monitoring from the University of Wisconsin-Madison and a master's degree from the University of Maine's department of forest management.