

# WPUI Energy Law Update

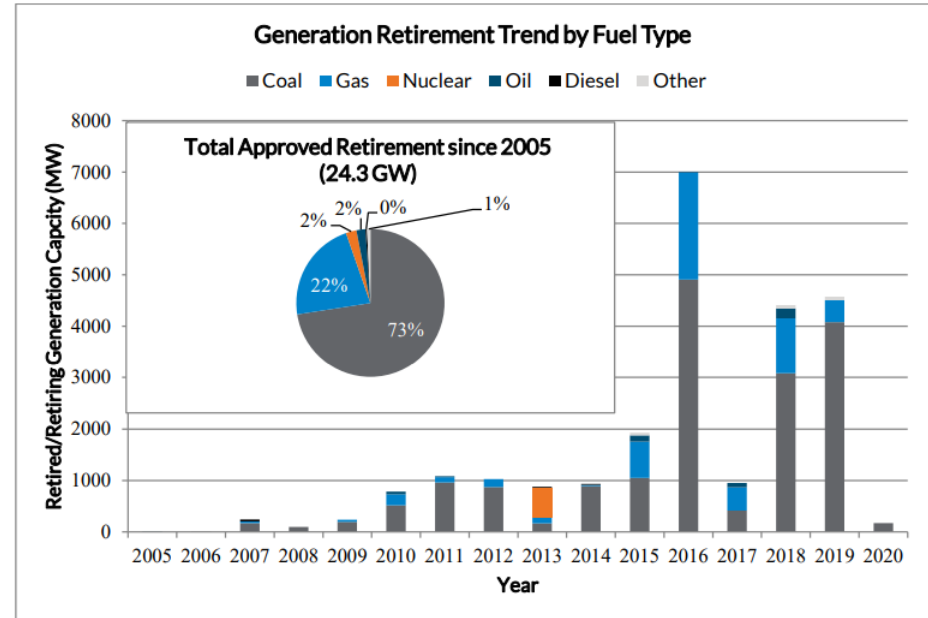
Jeff Ripp – Director Regulatory Strategy

March 4, 2020



# MISO generation trends

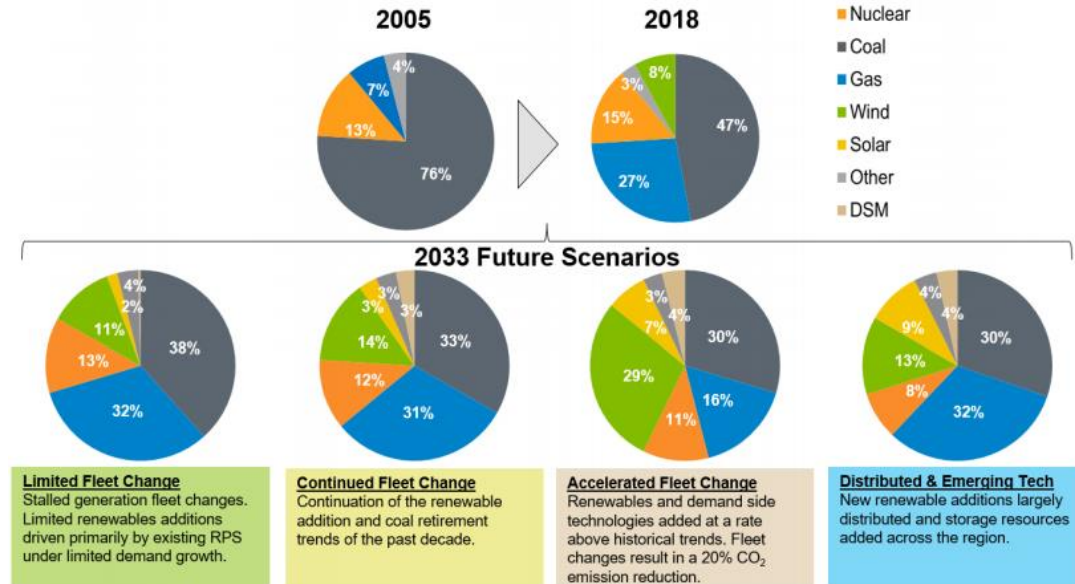
- Retirements have been accelerating in recent years
  - Especially marked since 2015
- Vast majority are coal facilities
  - Nearly 75% since 2005



From MISO MTEP19 report. Available online at <https://www.misoenergy.org/planning/planning/mtep-2019/>

# MISO future outlook

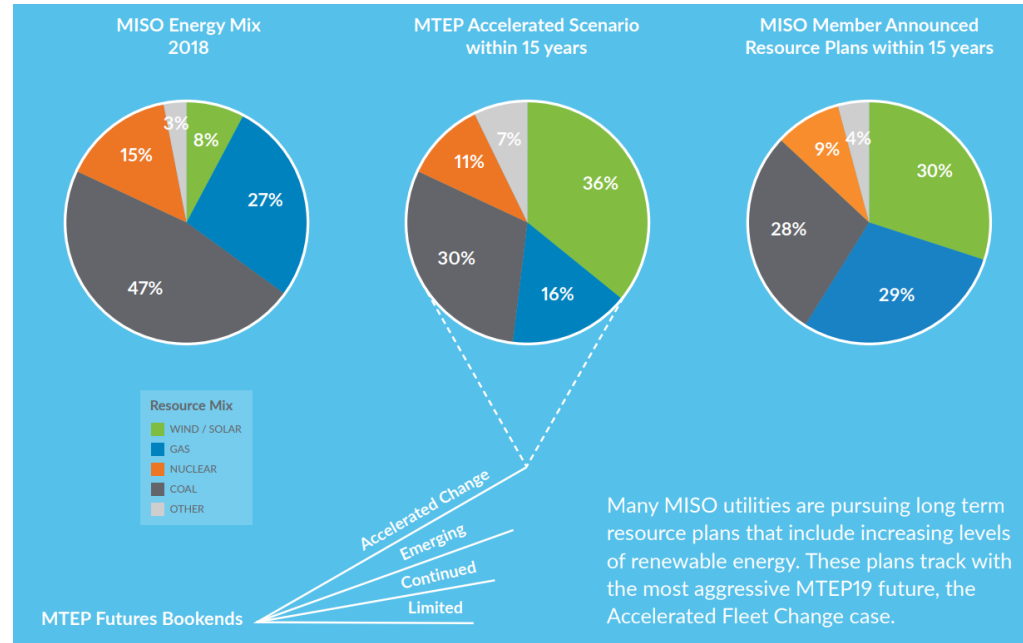
- Shift in generation projected by MISO in all futures
- Primarily away from coal and toward renewables
  - *Most (but not all) scenarios have more gas as well*



From MISO MTEP19 report. Available online at <https://www.misoenergy.org/planning/planning/mtep-2019/>

# No sign of slow-down in sight

- By time of publication, announced retirement plans in MISO exceeded most aggressive 2019 outlook
- Future likely to bring even more change



Many MISO utilities are pursuing long term resource plans that include increasing levels of renewable energy. These plans track with the most aggressive MTEP19 future, the Accelerated Fleet Change case.

From MISO MTEP19 report. Available online at <https://www.misoenergy.org/planning/planning/mtep-2019-/>