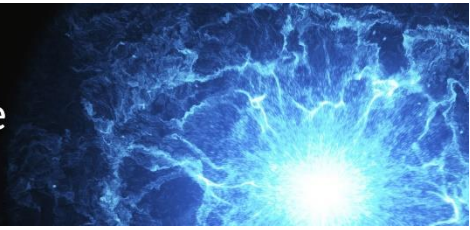




Wisconsin Public Utility Institute
UNIVERSITY OF WISCONSIN-MADISON



KEN SCHLIMGEN

Dairyland Power Cooperative

Ken Schlimgen joined Dairyland Power Cooperative in January 1996 as a customer relations specialist. Currently, he is the cooperative's manager of market operations, trading and wholesale energy. Over his 30 plus year career, Ken has worked both with and for cooperatives, municipals, and investor-owned utilities. He joined Wisconsin Power and Light (now Alliant Energy) in 1985 as an agribusiness representative. In 1991, he became an area manager. Upon joining Dairyland in 1996, he began working extensively with cooperative and municipal customers. In 1999, he was started managing the power marketing area, the same position he holds today. Ken earned bachelor degrees in education and animal science from the University of Wisconsin-Madison and a master's in business administration from Edgewood College. He has served on numerous national and local boards including the North American Energy Markets Association, the Midwest Reliability Organization's compliance committee, and his local school board. Ken and his wife and children live in the La Crosse area and operate a small beef farm raising registered Limousin breeding stock.