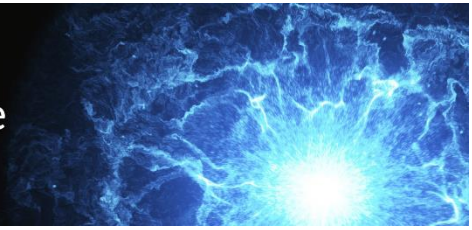




Wisconsin Public Utility Institute
UNIVERSITY OF WISCONSIN-MADISON



JESSICA SHRESTHA

Wheeler Van Sickle & Anderson, S.C.

Jessica Shrestha joined Wheeler, Van Sickle & Anderson in 2011 and became a shareholder of the firm in 2016. She concentrates her practice on real property law, environmental law, representation of electric cooperatives, and business transactions. Her work includes representing property owners in boundary disputes and adverse possession matters, resolving title issues, working on easement and right-of-way transactions, assisting clients with environmental regulatory issues, advising electric cooperatives on a variety of matters, and involvement in stray voltage and other liability litigation. Jessica has written articles on the law of adverse possession in Wisconsin and has been actively involved with legislation on the topic. She is a frequent presenter on real property law matters including adverse possession and on issues relating to electric cooperative management and governance. Prior to joining Wheeler, Jessica was engaged in private practice in Madison in the areas of employment law, insurance law, and general litigation. She also served as an extern at the Wisconsin Department of Justice and as a law clerk at the Madison City Attorney's office. She received her bachelor of arts in modern languages and international relations from Beloit College and her J.D. from the University of Wisconsin Law School.