



Tanya Paslawski
Executive Director

Marcus Hawkins
Director
Member Services
& Advocacy



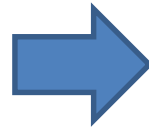
Organization of MISO States

WPUI
April 19, 2018

Drivers of Regional Cooperation

1990s

- Wholesale competition
- Open access transmission
- RTOs/ISOs



Stretched the manpower and expertise of states and state utility commissions

Led to calls for regional cooperation from:

- National Governors Association
- FERC

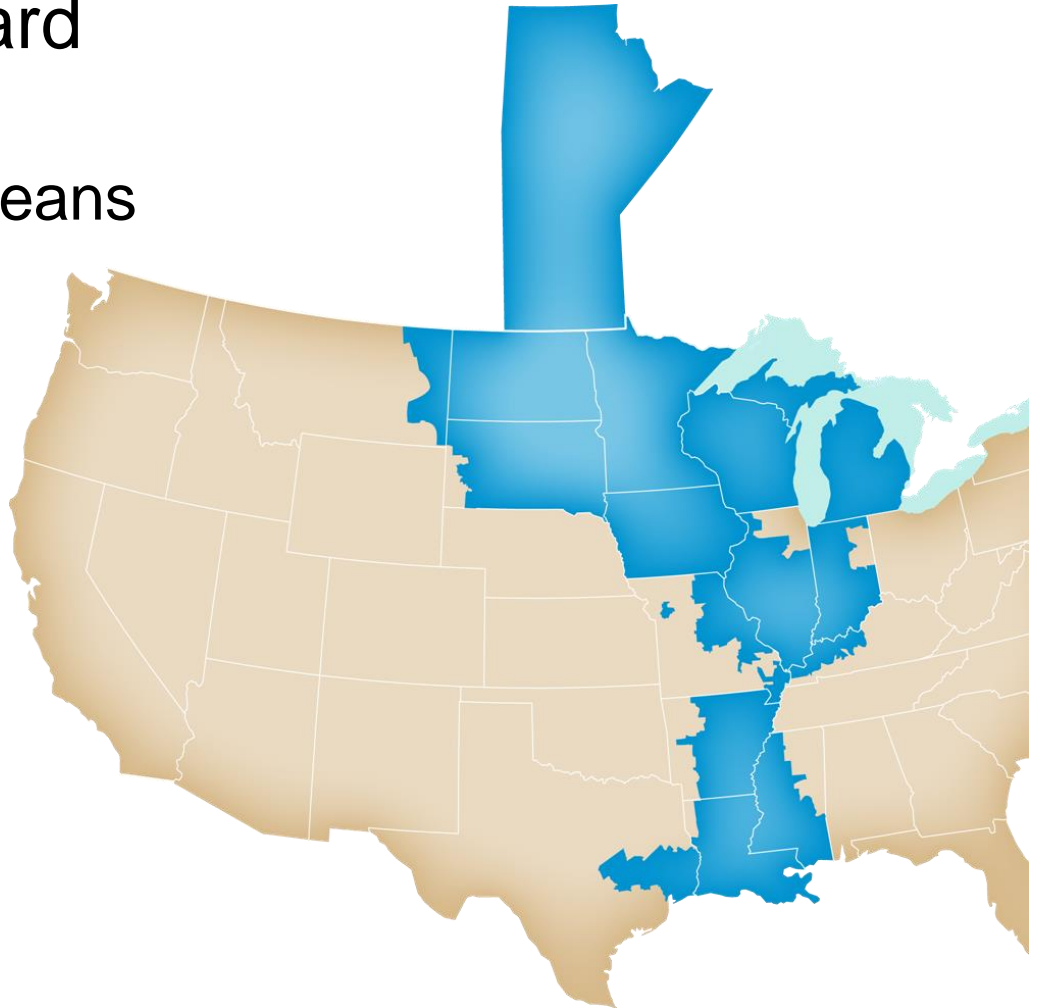
Basics

- Indiana not-for-profit, tax exempt 501(c)(4) established in 2003
- **Members** – Retail energy regulators in the MISO region
 - Retail electric or distribution rate jurisdiction, OR
 - Primary siting authority
- **Associate Members (non voting)**
 - Consumer advocates
 - Energy planning offices
 - Agencies involved in energy related environmental issues
 - Others as approved



Footprint

- 17 Member Board
 - 15 states
 - City of New Orleans
 - Manitoba



Funding

- Indiana not-for-profit corporation with 501(c)(4) tax exempt status (2003)
- Funding agreement signed with MISO
- Funding agreement includes statement of independence
- Agreement provides for dispute resolution by FERC



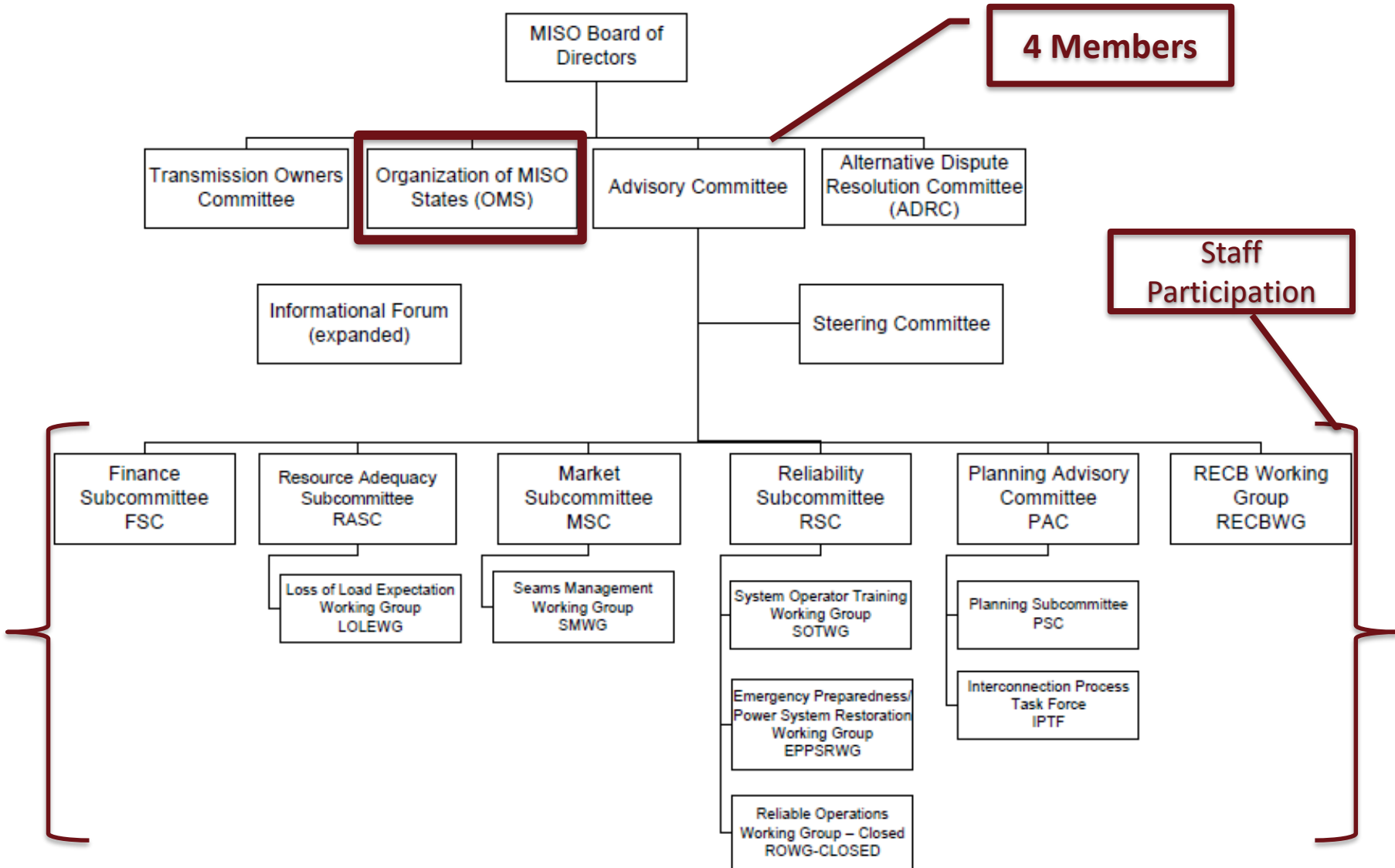
Cooperation

- Combined input when possible (FERC/MISO)
- Facilitate informed and efficient participation
 - Fund travel
 - Host events
 - Share knowledge (work groups, publications, etc.)

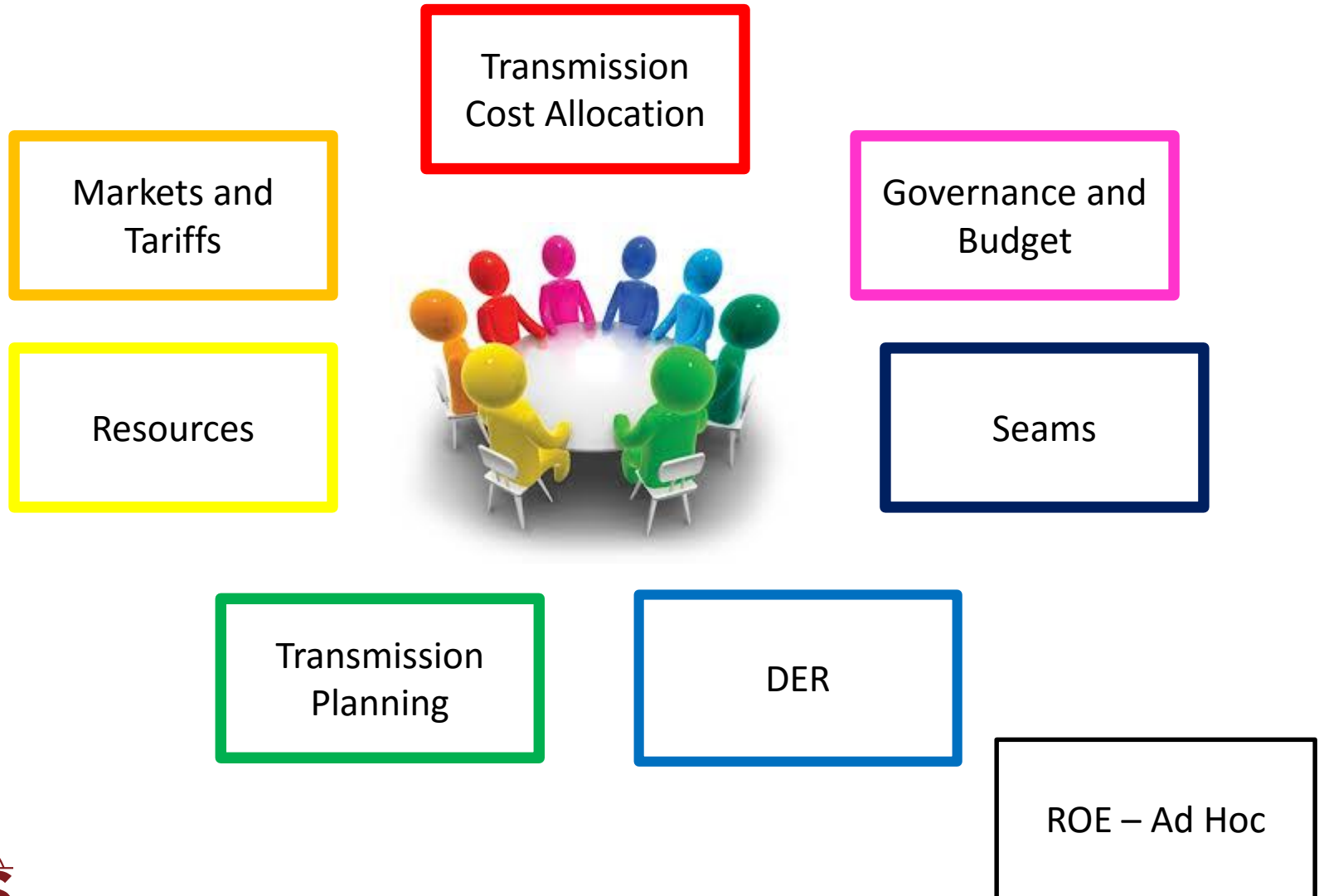


**The Power
of Working
Together**

Participation at MISO



Current Work Groups



2018 Priorities



- Transmission Planning
- Resource Adequacy
- Cost Allocation
- Distributed Energy Resources

More info:

Tanya Paslawski

tanya@misostates.org

Marcus Hawkins

marcus@misostates.org

Colleen Dougherty

colleen@misostates.org

(515) 243-0742



Reference Material



States and Wholesale Markets

- Utility wholesale decisions and costs show up in retail cases
- Link between wholesale and retail market structure
- May have authority to approve changes in RTO membership or participation
- States can advocate ways to shape the wholesale market for the benefit of the state's residents and businesses



States and Wholesale Markets

- States determine value of reliability
- States are responsible for supply adequacy
- States make land use decisions for new facilities
 - Balance cost, need, and other considerations
 - Public policy needs and impacts
 - Maybe consider criteria broader than state boundaries

